

GASARC™

AN ESAB® BRAND



SPEC MASTER HPL600 SERIES

6.0 Purity Single Stage Nickel Plated Brass Barstock Diaphragm Line Regulator

Spec Master HPL600 series single stage diaphragm line regulators are designed for secondary pressure gas control of non-corrosive or toxic, high purity gases up to grade 6.0 purity (99.9999%), on gas distribution systems.

- **HPL600 Series** | Single Stage Diaphragm Line Regulator

★ FEATURES

- Four port configuration
- Front and rear panel mounting capabilities
- Encapsulated seat design
- Low wetted surface area
- Full range of inlet and outlet fittings
- Base and side entry

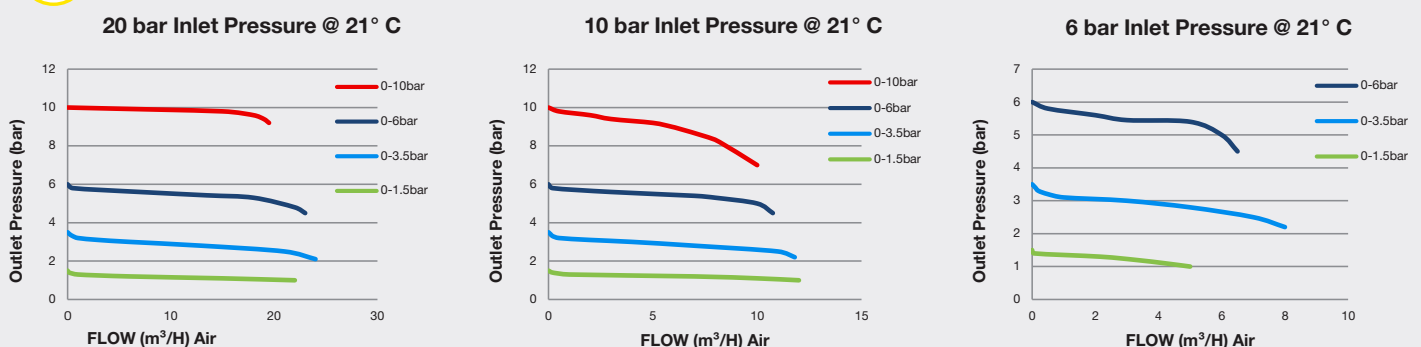
📄 MATERIALS

Body	Nickel Plated Brass Barstock
Bonnet	Nickel Plated Brass Barstock
Diaphragm	316L Stainless Steel
Seal	PTFE
Seat	PCTFE
Filter	10 Micron 316L Stainless Steel

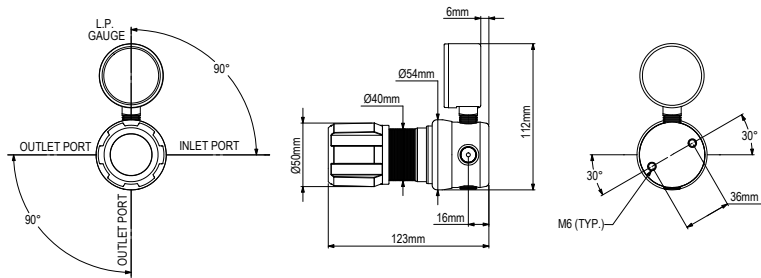
👍 SPECIFICATION

Maximum Inlet Pressure	207 bar (3000 PSI)
Delivery Pressure Range	1.5 bar (22 PSI) / 3.5 bar (50 PSI) / 6 bar (90 PSI) / 10 bar (150 PSI)
Gauges	50mm (2") Diameter
Ports	1/4" NPT Female
Temperature Range	-20° C to +60° C (-4° F to +140° F)
Flow Coefficient (Cv)	0.1
Helium leak Integrity	1 x 10 ⁻⁹ mbar l/s
Weight	1.1 kg (2.5 lb)

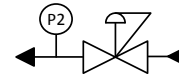
✓ FLOW PERFORMANCE



DIMENSIONS



PROCESS & INSTRUMENTATION



- Adjustable Pressure Regulator



- P2 Pressure Gauge

Model No. Selector Guide

Product Type	Inlet Pressure	Outlet Pressure	Inlet Pressure Gauge	Outlet Pressure Gauge	Inlet Connection	Outlet Connection	Options
HPL600	03 207 bar / 3000 PSIG	02 -1 - 1.5 bar / 22 PSIG	00 No Gauge Fitted	00 No Gauge Fitted	000 No Inlet Fitted	00 No Outlet Fitted	A No Options Selected
		03 -1 - 3.5 bar / 50 PSIG		01 bar/PSI	001 1/8 Stainless Steel Compression	01 1/8 Stainless Steel Compression	F Bonnet Vent Capture Kit
		04 -1 - 6 bar / 90 PSIG		10 Plugged Port	002 1/4 Stainless Steel Compression	02 1/4 Stainless Steel Compression	G Helium Test Certificate
		05 -1 - 10 bar / 150 PSIG		003 6mm Stainless Steel Compression	03 6mm Stainless Steel Compression	K Certificate of Conformity	
		004 1/4 NPT Male		04 1/4 NPT Male	L Panel Mount Locking Nut Kit		
		007 G3/8 BSP R/H Brass Male		07 G3/8 BSP R/H Brass Male	P Calibration/ Pressure Test Certificate		
		008 G3/8 BSP L/H Brass Male		08 G3/8 BSP L/H Brass Male	X Special Instruction		
		009 Isolation Valve, 1/4 NPT Female, FKM Seal		09 Isolation Valve, 1/4 NPT Female, FKM Seal			
		010 Isolation Valve, 1/4 NPT Female, EPDM Seal		10 Isolation Valve, 1/4 NPT Female, EPDM Seal			
		011 Isolation Valve, 1/8 Stainless Steel Compression, FKM Seal		11 Isolation Valve, 1/8 Stainless Steel Compression, FKM Seal			
		012 Isolation Valve, 1/8 Stainless Steel Compression, EPDM Seal		12 Isolation Valve, 1/8 Stainless Steel Compression, EPDM Seal			
		013 Isolation Valve, 1/4 Stainless Steel Compression, FKM Seal		13 Isolation Valve, 1/4 Stainless Steel Compression, FKM Seal			
		014 Isolation Valve, 1/4 Stainless Steel Compression, EPDM Seal		14 Isolation Valve, 1/4 Stainless Steel Compression, EPDM Seal			
		015 Isolation Valve, 6mm Stainless Steel Compression, FKM Seal		15 Isolation Valve, 6mm Stainless Steel Compression, FKM Seal			
		016 Isolation Valve, 6mm Stainless Steel Compression, EPDM Seal		16 Isolation Valve, 6mm Stainless Steel Compression, EPDM Seal			
		017 Isolation Valve, 1/4 NPT Male, FKM Seal		17 Isolation Valve, 1/4 NPT Male, FKM Seal			
		018 Isolation Valve, 1/4 NPT Male, EPDM seal		18 Isolation Valve, 1/4 NPT Male, EPDM seal			
		019 Isolation Valve, G3/8 BSP R/H Brass Male, FKM Seal		19 Isolation Valve, G3/8 BSP R/H Brass Male, FKM Seal			
		020 Isolation Valve, G3/8 BSP R/H Brass Male, EPDM Seal		20 Isolation Valve, G3/8 BSP R/H Brass Male, EPDM Seal			
		021 Isolation Valve, G3/8 BSP L/H Brass Male, FKM Seal		21 Isolation Valve, G3/8 BSP L/H Brass Male, FKM Seal			
		022 Isolation Valve, G3/8 BSP L/H Brass Male, EPDM Seal		22 Isolation Valve, G3/8 BSP L/H Brass Male, EPDM Seal			