



AN ESAB® BRAND



SPEC MASTER HPS600 SERIES

6.0 Purity Single Stage Nickel Plated Brass Barstock Diaphragm Cylinder Regulator

Spec Master HPS600 series single stage diaphragm cylinder regulators are designed for primary pressure gas control of non-corrosive or toxic, high purity gases up to grade 6.0 purity (99.9999%), on applications where slight variation from decreasing cylinder pressure is acceptable.

- **HPS600 Series** | Single Stage Diaphragm Cylinder Regulator, FFKM Pressure Relief Valve

★ FEATURES

- Six port configuration
- Front and rear panel mounting capabilities
- Encapsulated seat design
- Low wetted surface area
- Full range of inlet and outlet fittings
- Base and side entry

📄 MATERIALS

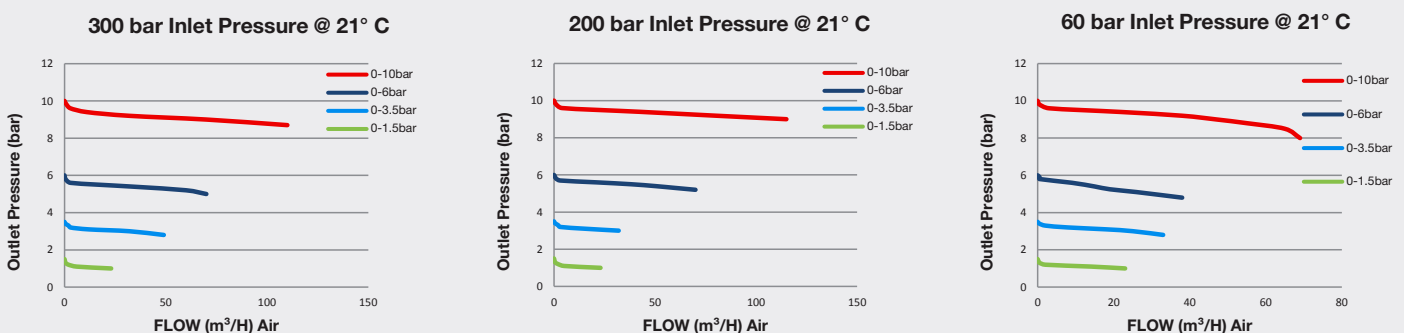
Body	Nickel Plated Brass Barstock
Bonnet	Nickel Plated Brass Barstock
Diaphragm	316L Stainless Steel
Seal	PTFE
Seat	PCTFE
Filter	10 Micron 316L Stainless Steel

👍 SPECIFICATION

Maximum Inlet Pressure	60 bar (870 PSI) / 300 bar (4350 PSI)*
Delivery Pressure Range	1.5 bar (22 PSI) / 3.5 bar (50 PSI) / 6 bar (90 PSI) / 10 bar (150 PSI)
Gauges	50mm (2") Diameter
Ports	1/4" NPT Female
Temperature Range	-20° C to +60° C (-4° F to +140° F)
Flow Coefficient (Cv)	0.1
Helium leak Integrity	1 x 10 ⁻⁹ mbar l/s
Weight	1.2 kg (2.7 lb)**

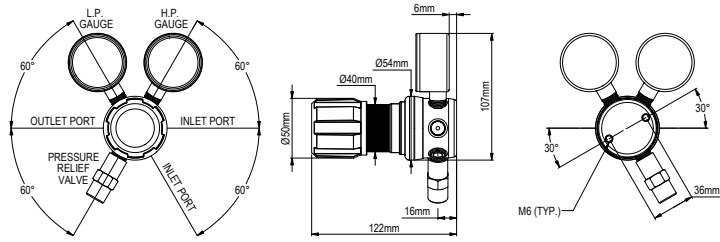
* Subject to cylinder connection ** Cylinder connection not included

✓ FLOW PERFORMANCE

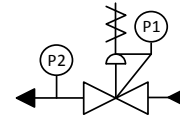




DIMENSIONS



PROCESS & INSTRUMENTATION



- Adjustable Pressure Regulator with P1 Pressure Gauge



- Pressure Relief Valve



- P2 Pressure Gauge

Model No. Selector Guide

Product Type	Inlet Pressure	Outlet Pressure	Inlet Pressure Gauge	Outlet Pressure Gauge	Inlet/Cylinder Connection	Outlet Connection	Options	
HPS600	02 60 bar / 870 PSI	02 -1 - 1.5 bar / 22 PSIG	00 No Gauge Fitted	00 No Gauge Fitted	000 No Inlet Fitted	00 No Outlet Fitted	A No Options Selected	
	04 300 bar / 4350 PSI	03 -1 - 3.5 bar / 50 PSIG	01 bar/PSI	01 bar/PSI	001 1/8 Stainless Steel Compression	01 1/8 Stainless Steel Compression	B Regular Tee Purge FKM	
		04 -1 - 6 bar / 90 PSIG	10 Plugged Port	10 Plugged Port	002 1/4 Stainless Steel Compression	02 1/4 Stainless Steel Compression	C Regular Tee Purge EPDM	
		05 -1 - 10 bar / 150 PSIG			003 6mm Stainless Steel Compression	03 6mm Stainless Steel Compression	F Bonnet Vent Capture Kit	
					004 1/4 NPT Male	04 1/4 NPT Male	G Helium Test Certificate	
					007 G3/8 BSP R/H Brass Male	07 G3/8 BSP R/H Brass Male	K Certificate of Conformity	
					008 G3/8 BSP L/H Brass Male	08 G3/8 BSP L/H Brass Male	L Panel Mount Locking Nut Kit	
					010 BS341 No.3	09 Isolation Valve, 1/4 NPT Female, FKM Seal	P Calibration / Pressure Test Certificate	
					012 BS341 No.4	10 Isolation Valve, 1/4 NPT Female, EPDM Seal	X Special Instruction	
					015 BS341 No.8	11 Isolation Valve, 1/8 Stainless Steel Compression, FKM Seal		
					030 DIN477 No.6	12 Isolation Valve, 1/8 Stainless Steel Compression, EPDM Seal		
					033 DIN477 No.9	13 Isolation Valve, 1/4 Stainless Steel Compression, FKM Seal		
					034 DIN477 No. 10	14 Isolation Valve, 1/4 Stainless Steel Compression, EPDM Seal		
					045 CGA320	15 Isolation Valve, 6mm Stainless Steel Compression, FKM Seal		
					052 CGA540	16 Isolation Valve, 6mm Stainless Steel Compression, EPDM Seal		
					053 CGA580	17 Isolation Valve, 1/4 NPT Male, FKM Seal		
					For our full range of cylinder connections refer to 'Cylinder Connections Data'		18 Isolation Valve, 1/4 NPT Male, EPDM seal	
							19 Isolation Valve, G3/8 BSP R/H Brass Male, FKM Seal	
							20 Isolation Valve, G3/8 BSP R/H Brass Male, EPDM Seal	
							21 Isolation Valve, G3/8 BSP L/H Brass Male, FKM Seal	
							22 Isolation Valve, G3/8 BSP L/H Brass Male, EPDM Seal	