



Magswitch Technology, Inc.
 8774 Yates Dr. Suite 140
 Westminster, CO 80031
 Magswitch.com.au
 303-468-0662

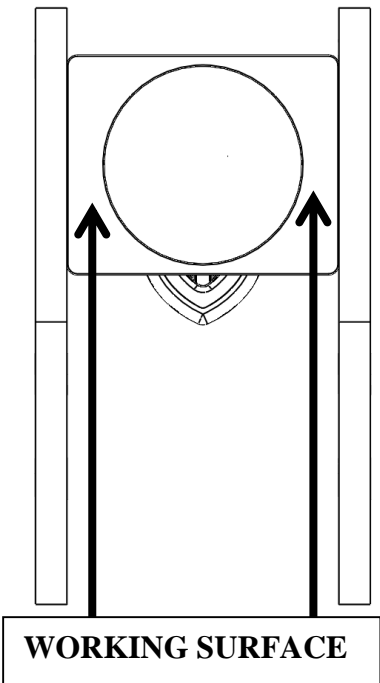
Magswitch Mini Angle P/N: 8100352

The Magswitch line of Mini Multi Angle workholding magnets offer you more angles in one product than any other magnetic angles. If you're tired of Mini angle magnets that claim they shut off, but really don't, then you'll love Magswitch. Magswitch Mini angles are hassle free. They stay clean for years of use. Once you use Magswitch Mini Angles, you will never settle for anything less!



WARNING!
**Do Not Operate Unless In
 Contact With Ferrous Target**

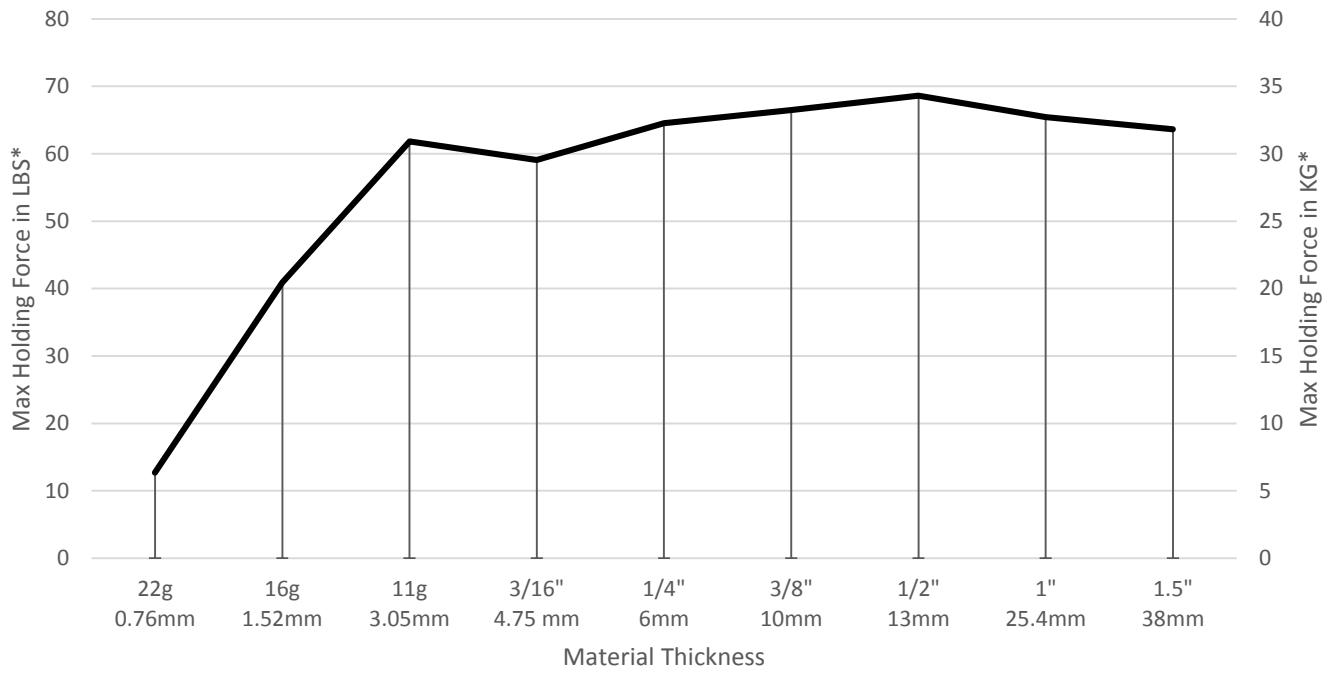
| SPECIFICATIONS | |
|--|-----------------|
| P/N: 8100352 - MAGSWITCH Mini Angle | |
| Max Breakaway* | 90 lbs/40 kg |
| Full Saturation Thickness | 11 g / 3.05 mm |
| Max Safe Shear* | 6 lbs / 2.7 kg |
| Net Weight | 0.4 lbs/0.2 kg |
| Overall Height | 55 mm |
| Magnetic Pole Footprint | 59.5 mm x 32 mm |



* Max Breakaway determined in laboratory environment on 2" thick SAE1018 Steel with surface roughness 63 micro inches. Many factors contribute to the actual breakaway force in each application. Always test the magswitch in each application before deployment. Refer to the magswitch information booklet for more information.



Magswitch Mini Angle Breakaway Data vs. Thickness

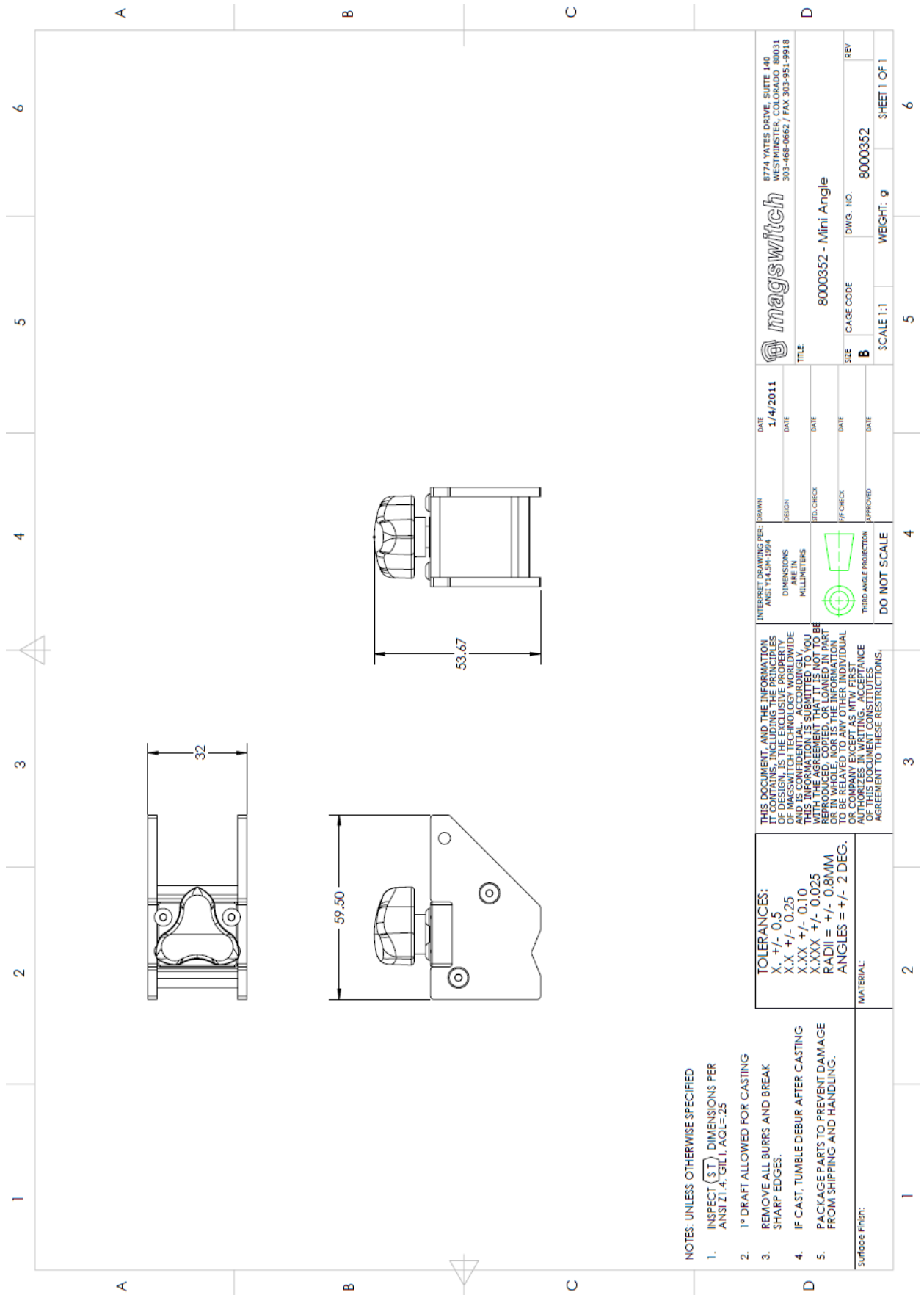


Part Number 110692
Revision Date: June 26, 2012

* Max Breakaway determined in laboratory environment on 2" thick SAE1018 Steel with surface roughness 63 micro inches. Many factors contribute to the actual breakaway force in each application. Always test the magswitch in each application before deployment. Refer to the magswitch information booklet for more information.



Part Number 110692
 Revision Date: June 26, 2012



- NOTES: UNLESS OTHERWISE SPECIFIED
1. INSPECT (ST) DIMENSIONS PER ANSIZ1.4, G1.1, AQL= .25
 2. 1° DRAFT ALLOWED FOR CASTING
 3. REMOVE ALL BURRS AND BREAK SHARP EDGES.
 4. IF CAST, TUMBLE DEBURR AFTER CASTING
 5. PACKAGE PARTS TO PREVENT DAMAGE FROM SHIPPING AND HANDLING.

TOLERANCES:
 X, +/- 0.5
 XX +/- 0.25
 XXX +/- 0.10
 XXXX +/- 0.025
 RADII = +/- 0.8MM
 ANGLES = +/- 2 DEG.

MATERIAL:

THIS DOCUMENT, INCLUDING THE INFORMATION IT CONTAINS, INCLUDING THE PRINCIPLES OF DESIGN, IS THE EXCLUSIVE PROPERTY OF MAGSWITCH, INC. AND IS CONFIDENTIAL, ACCORDINGLY, THIS INFORMATION IS SUBMITTED TO YOU ON A CONFIDENTIAL BASIS. IT IS NOT TO BE REPRODUCED, COPIED, OR LOANED IN PART OR IN WHOLE, NOR IS THE INFORMATION TO BE RELATED TO ANY OTHER INDIVIDUAL OR COMPANY EXCEPT AS MAY BE NECESSARY FOR THE PRODUCTION OF THIS DOCUMENT IN ACCORDANCE WITH THE AGREEMENT TO THESE RESTRICTIONS.

INTERNET DRAWING PER: ANSIZ14.3M-1994
 DIMENSIONS ARE IN MILLIMETERS
 THIRD ANGLE PROJECTION
 DO NOT SCALE

| | |
|------------|----------|
| DRAWN | DATE |
| DESIGN | 1/4/2011 |
| REV. CHECK | |
| OFF. CHECK | |
| APPROVED | |

| | | | |
|------------------|-----------|---|-----|
| magswitch | | 877A YATES DRIVE, SUITE 140 WESTMINSTER, COLORADO 80031 303-468-0662 / FAX 303-951-9918 | |
| TITLE: | | 8000352 - Mini Angle | |
| SIZE | CAGE CODE | DWG. NO. | REV |
| B | | 8000352 | |
| SCALE 1:1 | | WEIGHT: g | |
| | | SHEET 1 OF 1 | |

1 2 3 4 5 6