



Magswitch Technology, Inc.
 8774 Yates Dr. Suite 140
 Westminster, CO 80031
 Magswitch.com.au
 303-468-0662

Magswitch MagSquare 1000

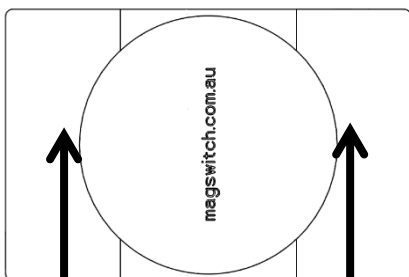
P/N: 810099

Welders and fabricators are raving about all the uses, convenience and time savings with Magswitch MagSquares. MagSquares are extremely powerful on off magnetic blocks with strong holding force available on all sides. Welders have never enjoyed this complete control over incredibly strong magnets (1,000 lbs (454 kg) on the MagSquare 1000). You can precisely position the MagSquare and material, and then turn the magnet on. MagSquares feature multi-plane workholding capability. It takes away the need for time consuming manual clamping on so many jobs, and works anywhere there is steel; you don't need an edge like you do with C-Clamps. All MagSquares are machined at 90 degrees, have pre tapped holes on all sides for mounting tools, jigs and fixtures. Fast 180 degree turn of the knob turns the MagSquare on and off. When off, nothing sticks to them. Once you understand all the uses, the time savings in set ups, and the ability to control these powerful magnetic blocks – you will want the entire range.



WARNING!
Do Not Operate Unless In
Contact With Ferrous Target

SPECIFICATIONS	
P/N: 810099 - MAGSWITCH MagSquare 1000	
Max Breakaway*	1000 lbs/454 kg
Full Saturation Thickness	0.5"/ 13mm
2:1 Shear Working Load*	148 lbs/67 kg
Net Weight	7.4 lbs/3.36 kg
Overall Height	147 mm
Magnetic Pole Footprint	72mm x 108mm



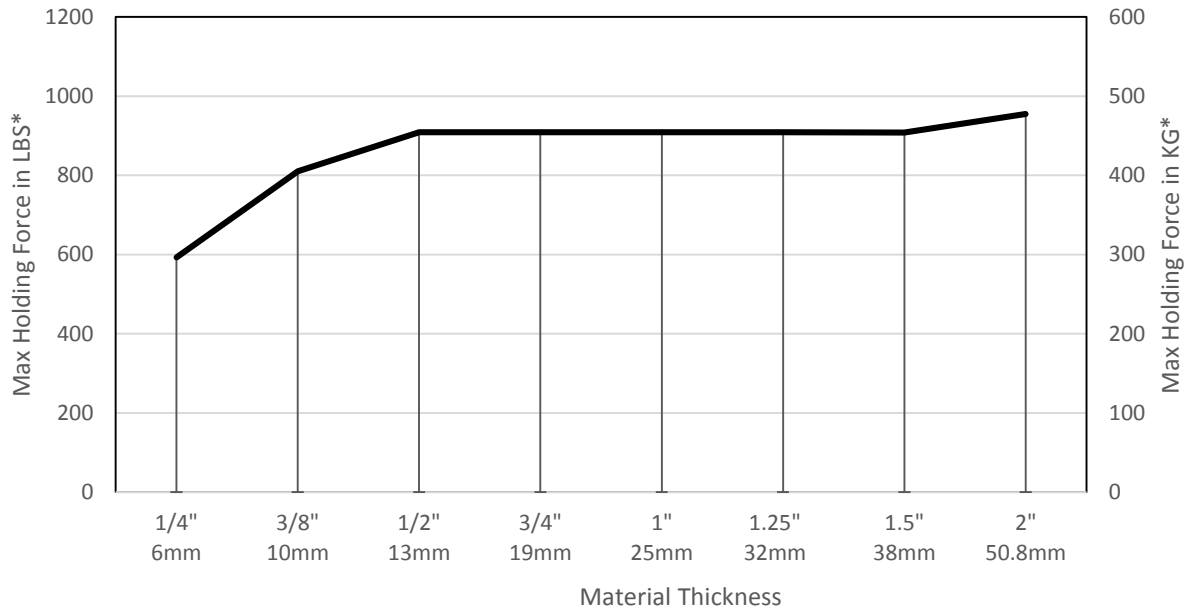
WORKING SURFACE



Part Number 110692
 Revision Date: June 26, 2012

* Max Breakaway determined in laboratory environment on 2" thick SAE1018 Steel with surface roughness 63 micro inches. Many factors contribute to the actual breakaway force in each application. Always test the magswitch in each application before deployment. Refer to the magswitch information booklet for more information.

Magswitch MagSquare 1000 Breakaway Data vs. Thickness

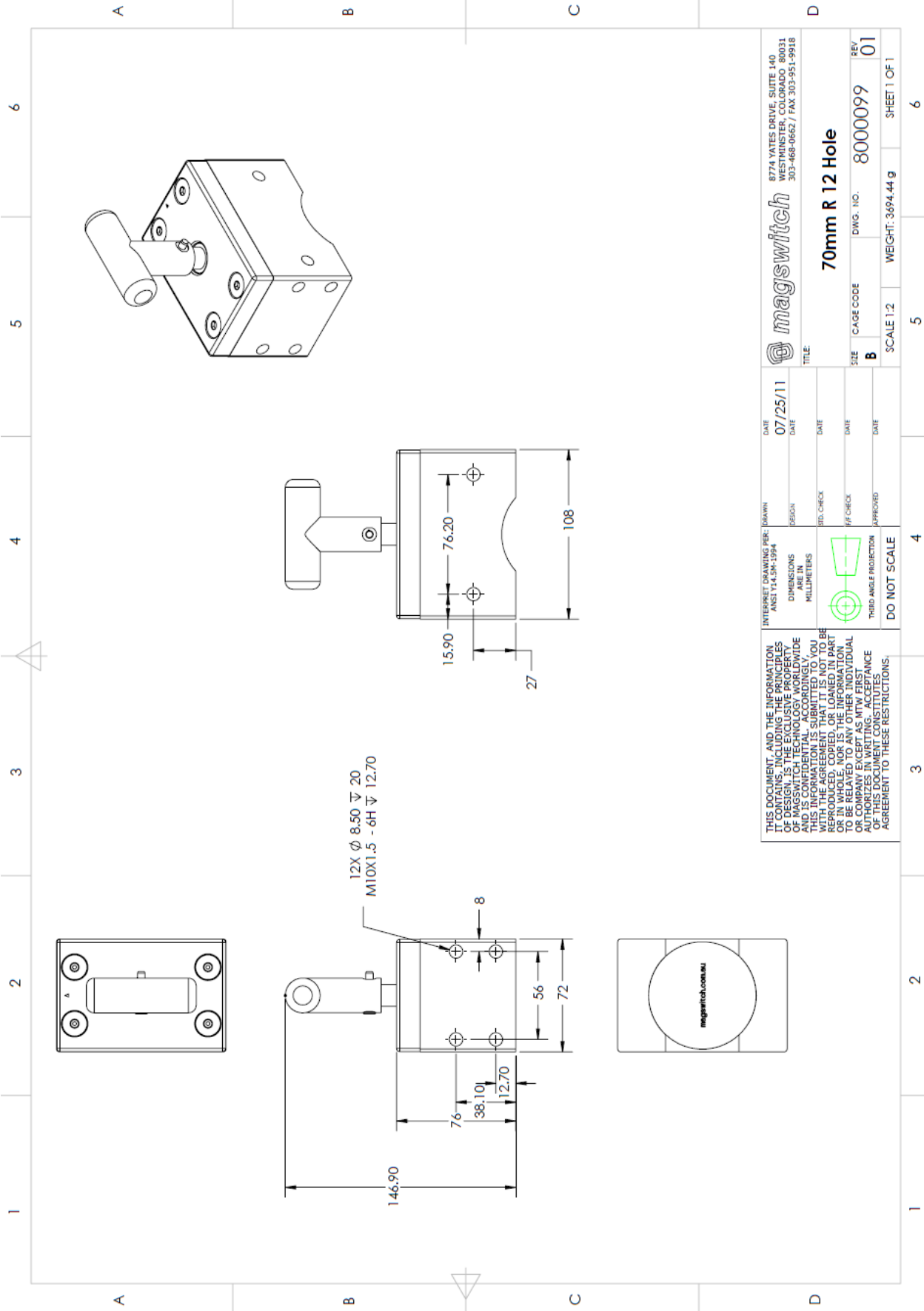


Part Number 110692
Revision Date: June 26, 2012

* Max Breakaway determined in laboratory environment on 2" thick SAE1018 Steel with surface roughness 63 micro inches. Many factors contribute to the actual breakaway force in each application. Always test the magswitch in each application before deployment. Refer to the magswitch information booklet for more information.



Part Number 110692
 Revision Date: June 26, 2012



		8774 YATES DRIVE SUITE 140 WESTMINSTER, COLORADO 80031 303-468-0662 / FAX 303-951-9818	
70mm R 12 Hole		CAGE CODE B	DWG. NO. 8000099
SCALE 1:2		WEIGHT: 3694.44 g	
SHEET 1 OF 1		6	
INTERPRET DRAWING PER: ANS1174.39-1994	DATE 07/25/11	DESIGN DATE	TITLE
DIMENSIONS ARE IN MILLIMETERS	3RD CHECK DATE	2ND CHECK DATE	1ST CHECK DATE
THIS DOCUMENT, AND THE INFORMATION IT CONTAINS, INCLUDING THE PRINCIPLES OF DESIGN, IS THE PROPERTY OF MAGSWITCH. IT IS TO BE USED ONLY FOR THE PROJECT AND IS CONFIDENTIAL, ACCORDINGLY, THIS INFORMATION IS SUBMITTED TO YOU UNDER THE CONDITION THAT YOU WILL NOT REPRODUCE, COPY, OR LOANED IN PART OR IN WHOLE, NOR IS THE INFORMATION TO BE RELATED TO ANY OTHER INDIVIDUAL OR COMPANY, EXCEPT AS IN WRITTEN AGREEMENT TO THESE RESTRICTIONS.	THIRD ANGLE PROJECTION DO NOT SCALE	APPROVED DATE	REV/ 01