

Cable Reel for Europe



Before using this product, carefully read this general safety rules and instruction listed below. Before starting work, make sure that you know how to stop reel in the event of emergency. Any other use could damage the product or cause serious injury. Keep these instructions in a safe place and on hand so that they can be read when required.

Technical Details

Item No.	Cable Specification				Volt (V)	Full-reeled Watts (W)	Full-extended Watts (W)
	Sectional Area (mm ²)	Number of Core	Type	Length (m)			
CR605152-L1	0.75	2	H05VV-F	15	230	60	60
CR605152-L1	1	2	H05VV-F	15	230	60	60
CR605152-L2	0.75	2	H05RN-F	15	230	11	11
CR605152-L2	1	2	H05RN-F	15	230	11	11
CR605103-S	1.5	3	H05VV-F	10	230	1000	2000
CR605153-S	1.5	3	H05VV-F	15	230	1000	2000
CR605103-S	1.5	3	H07RN-F	10	230	1000	2000
CR605153-S	1.5	3	H07RN-F	15	230	1000	2000
CR605103-S	2.5	3	H05VV-F	10	230	1600	3200
CR605103-S	2.5	3	H07RN-F	10	230	1600	3200

Electrical Information of Accessory

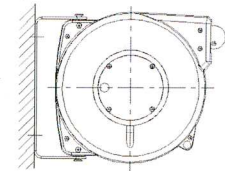
Accessory	Voltage	Ampere (A)
Incandescent Lamp (60Watt Max.) L1	230v 50Hz	10
Fluorescent Lamp L2	230v 50Hz	0.3
Household Socket	230v 50Hz	10
Industry Socket	230v 50Hz	10

Safety Precautions

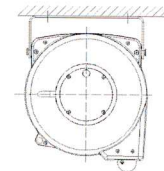
- 1) Ensure that only the qualified electrician can installs/services this cable reel. And it must be permitted by children or unskilled persons.
- 2) Ensure that power supply voltage does not exceed maximum voltage rating of reel.
- 3) Ensure that reel is properly installed before connecting to power supply.
- 4) Ensure that all electrical power is removed from reel before servicing.
- 5) Check for frayed and broken wires before each use.
- 6) When pull electrical cable from the reel always grasp the electrical cable itself, not the work device.
- 7) Remove power from the reel immediately when any malfunction occurs.
- 8) Never remove, tamper with or cut out the safety devices fitted by the manufacture.
- 9) Do not use the reel in damp or wet conditions. Keep the work area is clean. Avoid put in sundries in cable reel.

Installation

- 1) The cable reel must be installed in premises conforming to current regulation and standards covering electrical systems and work environments.
- 2) Secure the cable reel to the wall and the ceiling according to the installation diagrams. Using screw anchors or suitable screws which must be fitted in the holes in the brackets.
- 3) Adjust the cable stopper to the suitable position when required.



Wall



Ceiling

Operation

1. Check reel for correct operation by slowly pulling out the hose. A “clicking” noise will be heard every half revolution of the drum.
2. To latch the reel, pull out the cable and allow it to retract after hearing the first second or third “click”.
3. To unlatch, slowly pull out the hose until the “clicking” noise stops, then let the cable retract until the cable stopper rests against the cable guide.

Note: To avoid damage to the reel, always hold on to the cable while it is rewinding.

Maintenance

Make sure the cable is in proper working order and that the insulation is not cut or worn as this could represent a hazard and jeopardize operation.

Clean the cable with a cloth dipped in warm water to remove dirt or deposits and ensure correct rewinding.

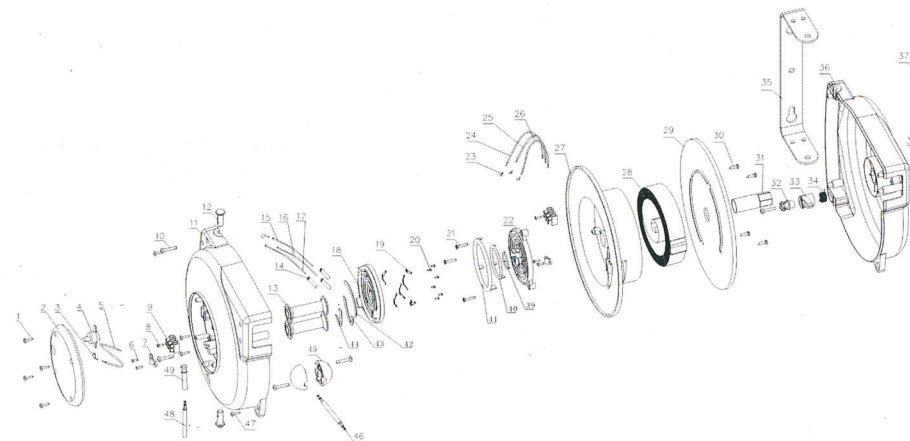
Do not use detergents or solvents which could prove incompatible with cable-winder materials.

If the event of having to perform maintenance on the electrical, mechanical parts or replace the cable, contact an authorized after-sale service center.

Dismantling of the unit by unskilled personal could prove hazardous; the risk involved mainly concern the preloaded springs.

Limited Warranty

1. The manufacturer warrants this cable reel against defects in material and craftsmanship, for a period of 12 months from date of purchase.
2. Manufacturer's liability is limited to replacement or repair of defective material within the warranty period, when returned freight prepaid to the distributor or their designated service depot.
3. The warranty does not cover damage caused by accident, misuse or faulty installation.
4. The reel must be installed and maintained in compliance with the instructions.



CR605 Parts List

Part No.	Description	Quantity	Part No.	Description	Quantity
1	Screw ST4.2×33.5	8	26	Connect wire	1
2	Plastic cover	1	27	Drum	1
3	Termination 6.3	2	28	Spring	1
4	Thermal cut-out	1	29	Drum	1
5	Connect wire	1	30	Screw ST4.2×19	4
6	Screw ST2.9×9.5	4	31	Axle	1
7	Cable clamp	2	32	Ratchet axle	1
8	Screw ST2.9×14	2	33	Ratchet paw	1
9	Terminal block	2	34	Spring	1
10	Screw M5×25	2	35	Bracket	1
11	Cover	1	36	Cover	1
12	Pin	2	37	Nut M5	2
13	Roller	2	38	Plastic cover	1
14	Shrinkable tube	3	39	Slip ring	1
15	Connect wire	1	40	Slip ring	1
16	Connect wire	1	41	Slip ring	1
17	Connect wire	1	42	Half copper ring	1
18	Fixed plate	1	43	Half copper ring	1
19	Touch slice	6	44	Half copper ring	1
20	Copper rivet	6	45	Stop block	2
21	Screw ST4.2×22	3	46	Inlet, flexible cable	1
22	Movable plate	1	47	Screw ST4.2×16	1
23	Termination 4.8	3	48	Outlet, flexible cable	1
24	Connect wire	1	49	Protect sheath	1
25	Connect wire	1			